

**KONRAD
TOOLS**

**Turning
Tools
Catalogue**



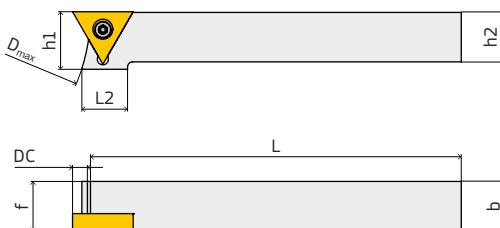
Special Tools

<p>2</p> <p>Multi3 Cut</p> <p>Multi3 Cut F – External radial holder 2</p> <p>Multi3 Cut F – External axial holder 3</p> <p>Blanks for Multi3 Cut F 4</p> <p>Multi3 Cut – External radial holder 5</p> <p>Multi3 Cut – External axial holder 6</p> <p>Multi3 Cut – Internal holder 7</p> <p>Blanks for Multi3 Cut 8</p> <p>Multi3 Cut J – External radial holder 9</p> <p>Blanks for Multi3 Cut J 10</p>	<p>11</p> <p>Duo Cut</p> <p>Duo Cut – External holder 11</p> <p>Blanks for Duo Cut 12</p> <p>Duo Cut A – External radial holder 13</p> <p>Blanks for Duo Cut A 14</p>	<p>15</p> <p>SCGW</p> <p>External holder 15</p> <p>Internal holder 17</p> <p>Blanks for SCGW 18</p>
<p>19</p> <p>Contour Groove</p> <p>Contour Groove 30 – Holder 19</p> <p>Blanks for Contour Groove 30 20</p> <p>Contour Groove – Holder 21</p> <p>Blanks for Contour Groove 22</p>	<p>23</p> <p>Mini Modular System</p> <p>Holder 23</p> <p>Blanks for Mini Modular System 24</p>	<p>25</p> <p>Mini Cut System</p> <p>Holder 25</p> <p>Blanks for Mini Cut System 26</p> <p>Standard inserts for Mini Cut System 28</p>
<p>31</p> <p>Grade – Grades of Available</p>	<p>32</p> <p>Coating</p> <p>The most commonly used coatings 32</p>	

Grooving system for radial or axial application. Insert with 3 cutting edges, four insert sizes. Groove width from 0,5 to 7 mm. Groove depth up to 6 mm. Custom solution (specific shapes) on request

External radial holder

M3C	R/L	H	2020	J	S	X
Multi3 Cut	Right-hand or Left-hand version	Holder	Shank height × shank width [mm]	Length (ISO)	Type of blank	Depth of place for blank [mm] × 100

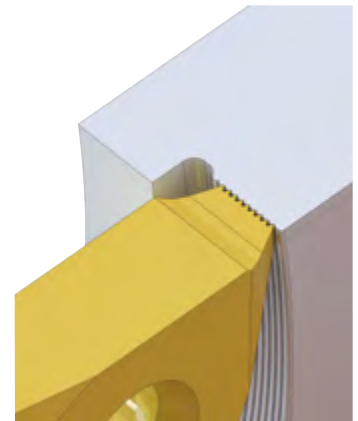
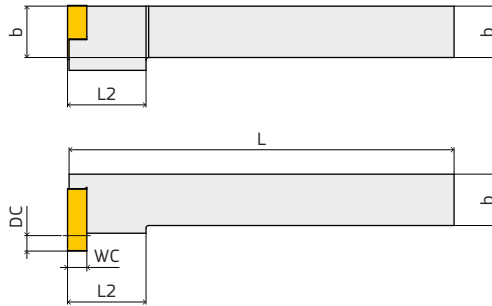


Ordering Code	Ident No.	DC	h = b	h1	b	L	f	L2	D _{max}	Suitable Blanks
M3C R/L H 1212 MFS	M3C R/L H 1212 MFS	2,5	12	12	12	127	12	17	120	B-M3CFS ...
M3C R/L H 1616 MFS	M3C R/L H 1616 MFS	2,5	16	16	16	150	16	-	120	B-M3CFS ...
M3C R/L H 2020 MFS	M3C R/L H 2020 MFS	2,5	20	20	20	152	20	-	120	B-M3CFS ...
M3C R/L H 2525 MFS	M3C R/L H 2525 MFS	2,5	25	25	25	152	25	-	120	B-M3CFS ...
M3C R/L H 1616 MFB	M3C R/L H 1616 MFB	6,0	16	19	16	155	16	18	150	B-M3CFB ...
M3C R/L H 2020 MFB	M3C R/L H 2020 MFB	6,0	20	23	20	155	20	18	150	B-M3CFB ...
M3C R/L H 2525 MFB	M3C R/L H 2525 MFB	6,0	25	28	25	155	25	18	150	B-M3CFB ...

Spare Parts	Ordering Code				
Holder	Screw	Key			
M3C R/L H ... FS ...	TS 1007	KK 0107			
M3C R/L H ... FB ...	TS 1002	KK 0102			

External axial holder

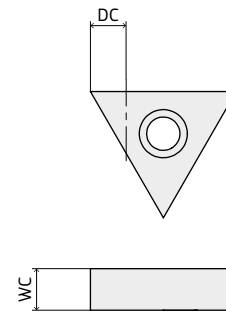
M3C	R/L	A	H	2020	J	FB	X
Multi3 Cut	Right-hand or Left-hand version	Axial holder	Holder	Shank height × shank width [mm]	Length (ISO)	Type of blank	Depth of place for blank [mm] × 100



Ordering Code	Ident No.	WC	DC	h=b	L	L2	Suitable Blanks
M3C R/L AH 2020 MFB	M3C R/L AH 2020 MFB	7	6	20	150	30	B-M3CFB ...

Blanks for Multi3 Cut F

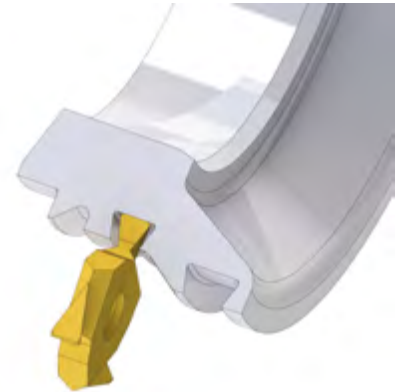
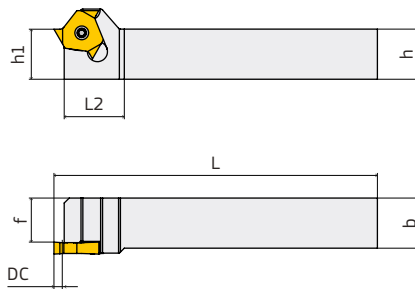
B	M3C	B	46	N	C2
Blank	Multi3 Cut	Type of blank	Width of blank [mm] ×10	Neutral-hand version	Grade code



Ordering Code	Ident No.	WC +0,05	DC	Grade		
				C22	C42	G2
B-M3CFS35 N	B-M3CFS35 N	3,5	2,5	●	●	
B-M3CFB70 N	B-M3CFB70 N	7	6	●	●	

External radial holder

M3C	R/L	H	2020	J	S	X
Multi3 Cut	Right-hand or Left-hand version	Holder	Shank height × shank width [mm]	Length (ISO)	Type of blank	Depth of place for blank [mm] × 100



Ordering Code	Ident No.	DC	h = b	h1	b	L	f	L2	D _{max}	Suitable Blanks
M3C R/L H 1010 ES	M3C R/L H 1010 ES	2	10	10	10	72,5	10	17,5	-	B-M3CS 16-26 ...
M3C R/L H 1212 FS	M3C R/L 1212 FS	2	12	12	12	82,5	12	17,5	-	B-M3CS 16-26 ...
M3C R/L H 1616 JS	M3C R/L 1616 JS	2	16	16	16	112,5	16	17,5	-	B-M3CS 16-26 ...
M3C R/L H 1616 JS/300	M3C R/L H 1616 JS/300	2	16	16	16	112,5	14,8	17,5	-	B-M3CS 31-46 ...
M3C R/L H 2020 KS	M3C R/L H 2020 KS	2	20	20	20	127,5	20	17,5	-	B-M3CS 16-26 ...
M3C R/L H 2020 KS/300	M3C R/L H 2020 KS/300	2	20	20	20	127,5	18,8	17,5	-	B-M3CS 31-46 ...
M3C R/L H 2525 MS	M3C R/L H 2525 MS	2	25	25	25	152,5	25	17,5	-	B-M3CS 16-26 ...
M3C R/L H 2525 MS/300	M3C R/L H 2525 MS/300	2	25	25	25	152,5	23,8	17,5	-	B-M3CS 31-46 ...
M3C R/L H 1616 JB	M3C L/R H 1616 JB	3,5	16	16	16	114	16	22,5	-	B-M3CB 26-38 ...
M3C R/L H 1616 JB/400	M3C L/R H 1616 JB/400	3,5	16	16	16	114	13,8	22,5	-	B-M3CB 46-72 ...
M3C R/L H 2020 KB	M3C L/R H 2020 KB	3,5	20	20	20	129	20	22,5	-	B-M3CB 26-38 ...
M3C R/L H 2020 KB/400	M3C R/L H 2020 KB/400	3,5	20	20	20	129	17,8	22,5	-	B-M3CB 46-72 ...
M3C R/L H 2525 MB	M3C R/L H 2525 MB	3,5	25	25	25	154	25	22,5	-	B-M3CB 26-38 ...
M3C R/L H 2525 MB/400	M3C R/L H 2525 MB/400	3,5	25	25	25	154	22,8	22,5	-	B-M3CB 46-72 ...

Spare Parts	Ordering Code	
Holder	Screw	Key
M3C R/L H ... S ...	TS 0007	KK 1751
M3C R/L H ... B ...	TS 0002	KK 1111

External axial holder

M3C	R/L	A	H	2020	J	K
------------	------------	----------	----------	-------------	----------	----------

Multi3 Cut

Right-hand or
Left-hand version

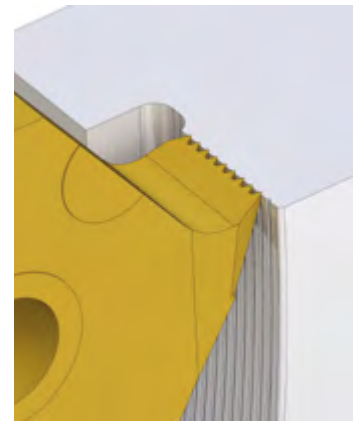
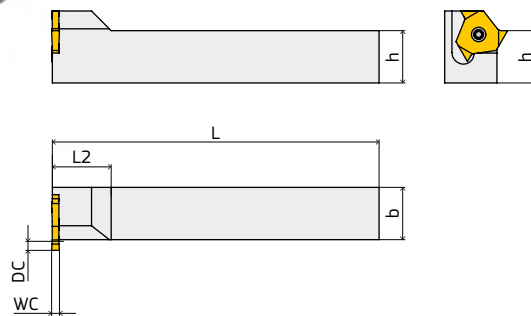
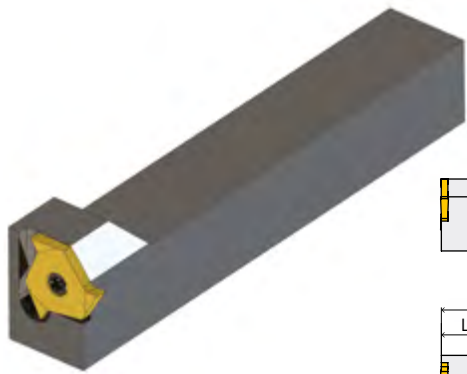
Axial holder

Holder

Shank height x
shank width [mm]

Length (ISO)

Type of blank

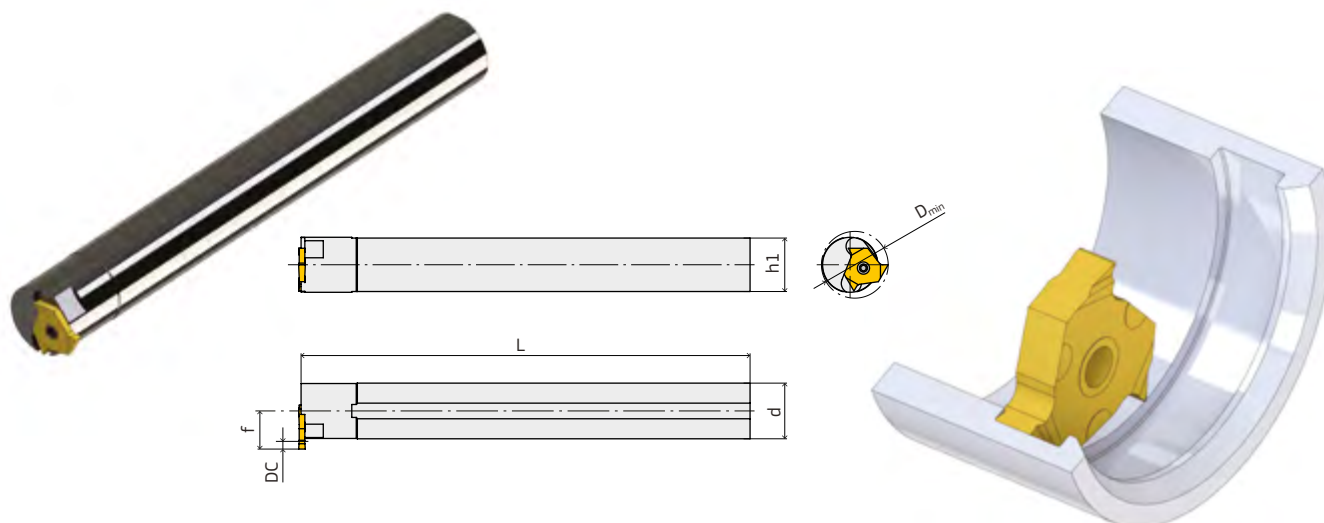


Ordering Code	Ident No.	WC	DC	h=b	L	L2	Suitable Blanks
M3C R/L AH 2020 KS	M3C R/L AH 2020 KS	1,0–4,7	1,5–2,0	20	125	17,5	B-M3CS ...
M3C R/L AH 2020 KB	M3C R/L AH 2020 KB	1,5–7,0	2,0–3,0	20	125	22,5	B-M3CB ...

Spare Parts	Ordering Code				
Holder	Screw	Key			
M3C R/L H ... S ...	TS 0007	KK 1751			
M3C R/L H ... B ...	TS 0002	KK 1111			

Internal holder

A	20	K	-	M3C	R/L	H	S	X
Internal holder with IK	Diameter of shank [mm]	Length (ISO)		Multi3 Cut	Right-hand or Left-hand version	Holder	Type of blank	Depth of place for blank [mm] × 100

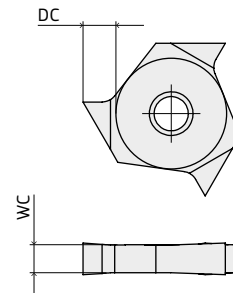


Ordering Code	Ident No.	D _{min}	DC	d	h1	L	f	Suitable Blanks
A12K-M3C R/L H S	A12K-M3C R/L H S	16	2	12	11	127	8,5	B-M3CS 16-21 ...
A12K-M3C R/L H S/300	A12K-M3C R/L H S/300	16	2	12	11	128	8,5	B-M3CS 31-46 ...
A16M-M3C R/L H S	A16M-M3C R/L H S	16	2	16	15	152	8,5	B-M3CS 16-21 ...
A16M-M3C R/L H S/300	A16M-M3C R/L H S/300	16	2	16	15	153	8,5	B-M3CS 31-46 ...
A20Q-M3C R/L H S	A20Q-M3C R/L H S	16	2	20	19	182	8,5	B-M3CS 16-21 ...
A20Q-M3C R/L H S/300	A20Q-M3C R/L H S/300	23	2	20	19	183	12,5	B-M3CS 31-46 ...
A25R-M3C R/L H B	A25R-M3C R/L H B	30	4	25	24	202	17	B-M3CB 26-38 ...
A25R-M3C R/L H B/400	A25R-M3C R/L H B/400	30	4	25	24	204	17	B-M3CB 46-72 ...
A32S-M3C R/L H B	A32S-M3C R/L H B	37	4	32	30	252	20,5	B-M3CB 26-38 ...
A32S-M3C R/L H B/400	A32S-M3C R/L H B/400	37	4	32	30	254	20,5	B-M3CB 46-72 ...

Spare Parts	Ordering Code			
Holder	Screw	Key		
M3C R/L H ... S ...	TS 0007	KK 1751		
M3C R/L H ... B ...	TS 0002	KK 1111		

Blanks for Multi3 Cut

B	M3C	B	46	R/L	C2
Blank	Multi3 Cut	Type of blank	Width of blank [mm] ×10	Right-hand or Left-hand version	Grade code



Ordering Code	Ident No.	WC +0,05	DC	Grade		
				C22	C42	G2
B-M3CS16 R/L	B-M3CS16 R/L	1,65	2	●	●	●
B-M3CS18 R/L	B-M3CS18 R/L	1,9	2	●	●	●
B-M3CS21 R/L	B-M3CS21 R/L	2,2	2	●	●	●
B-M3CS26 R/L	B-M3CS26 R/L	2,7	2	●	●	●
B-M3CS31 R/L	B-M3CS31 R/L	3,2	2	●	●	●
B-M3CS46 R/L	B-M3CS46 R/L	4,7	2	●		
B-M3CB26 R/L	B-M3CB26 R/L	2,7	3,5	●	●	●
B-M3CB31 R/L	B-M3CB31 R/L	3,2	3,5	●	●	●
B-M3CB38 R/L	B-M3CB38 R/L	3,9	3,5	●	●	●
B-M3CB46 R/L	B-M3CB46 R/L	4,7	3,5	●	●	●
B-M3CB51 R/L	B-M3CB51 R/L	5,2	3,5	●		
B-M3CB72 R/L	B-M3CB72 R/L	7,3	3,5	●		

External radial holder

M3C	R/L	H	2020	J	S	X
Multi3 Cut	Right-hand or Left-hand version	Holder	Shank height x shank width [mm]	Length (ISO)	Type of blank	Depth of place for blank [mm] x 100



Fig. 1

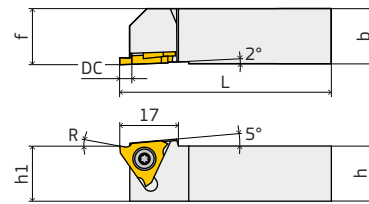
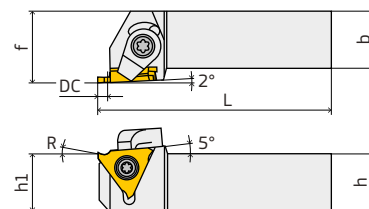


Fig. 2



R = Rake angle

Ordering Code	Ident No.	DC	h=b	h1	b	L	f	Fig.	Suitable Blanks
M3C R/L H 1616 KJS	M3C R/L H 1616 KJS	2,5	16	16	16	125	16	1	B-M3CJS ...
M3C R/L H 2020 KJS	M3C R/L H 2020 KJS	2,5	20	20	20	125	20	2	B-M3CJS ...
M3C R H 2020 MJB	M3C R H 2020 MJB	5	20	20	20	150	20	2	B-M3CJB ...
M3C R H 2525 MJB	M3C R H 2525 MJB	5	25	25	25	150	25	2	B-M3CJB ...

Spare Parts	Ordering Code			
Holder	Screw	Key	Clamp	
M3C R/L H 1616..JS	KT 0409N	KK 1111	-	
M3C R/L H 2020..JS	KT 0409N	KK 1112	KT M6B R/L	
M3C R ... JB	KT 0511N	KK 2525	KT M8U R	

Blanks for Multi3 Cut J

B	M3C	B	46	R/L	C2
Blank	Multi3 Cut	Type of blank	Width of blank [mm] ×10	Right-hand or Left-hand version	Grade code



Fig. 1

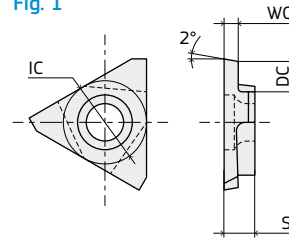
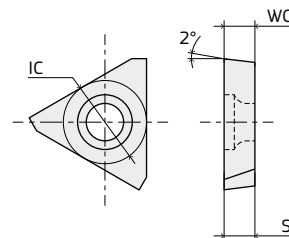


Fig. 2

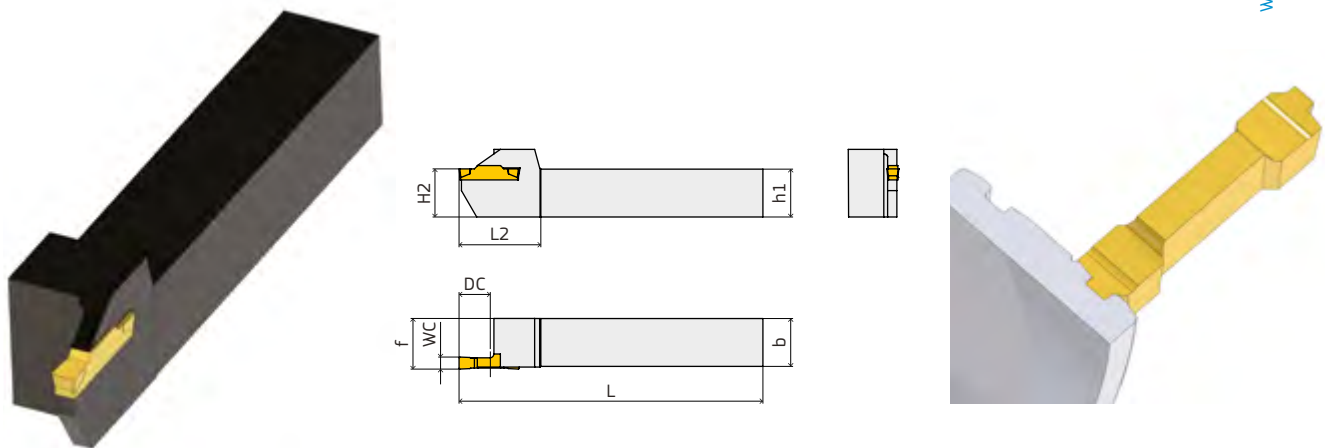


Ordering Code	Ident No.	WC	S	DC	IC	Fig.	Grade	
							C22	G2
B-M3CJS23 R/L	B-M3CJS23 R/L	2,35	3,18	3,4	9,525	1		●
B-M3CJS31 R	B-M3CJS31 R	3,18	3,18	3,4	9,525	2	●	
B-M3CJB47 R	B-M3CJB47 R	4,76	4,76	6,2	12,7	2	●	●

Grooving system for radial application. Active insert clamping with fixed stop – very stable and accurate insert positioning – pulling out the insert is not possible. Insert with 2 cutting edges. Custom solution (specific shapes) on request.

External holder

DC	R/L	H	2020	K	06
Duo Cut	Right-hand or Left-hand version	Holder	Shank height x shank width [mm]	Length (ISO)	Width of blank [mm]

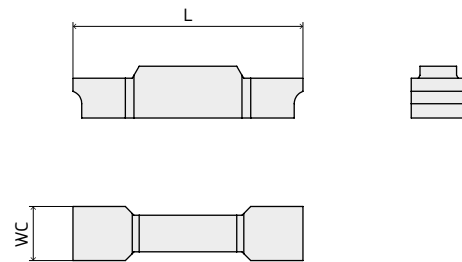


Ordering Code	Ident No.	WC	DC	h1 = b	L	L2	H2	f	Suitable Blanks
DC R/L H 2020 K06	DC R/L H 2020 K06	6	13	20	125	34	20	21	B-DC0626
DC R/L H 2525 M06	DC R/L H 2525 M06	6	13	25	150	34	25	26	B-DC0626

Spare Parts	Ordering Code			
Holder	Screw	Key		
DC R/L H... 06	TT 5512 044-01	KK 5680 043-17		

Blanks for Duo Cut

B	DC	06	26	C4
Blank	Deep Groove	Width of blank [mm]	Insert length [mm] ×10	Grade code



Ordering Code	Ident No.	WC	L	Grade
				C69
B-DC0626	B-DC0626	6	26	●

External radial holder

DC	R/L	H	2020	H	J	035
Duo Cut	Right-hand or Left-hand version	Holder	Shank height × shank width [mm]	Length (ISO)	Type of blank	Width of blank [mm]



Fig. 1

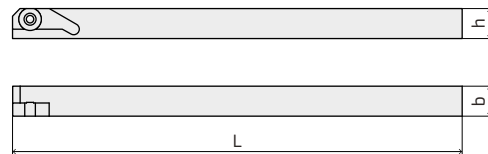
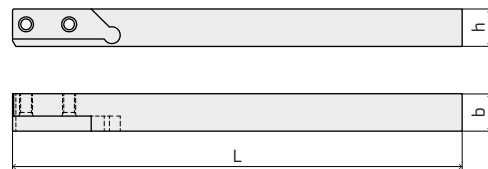


Fig. 2



Ordering Code	Ident No.	h=b	L	Fig.	Suitable blanks
DC R/L H 0808 KA035	DC R/L H 0808 KA035	8	124	1	B-DCA035 ...
DC R/L H 1212 KA035	DC R/L H 1212 KA035	12	124	1	B-DCA035 ...
DC R/L H 1616 HA035	DC R/L H 1616 HA035	16	100	1	B-DCA035 ...
DC R/L H 2020 HA035	DC R/L H 2020 HA035	20	100	1	B-DCA035 ...
DC R H 1212 KA060	DC R H 1212 KA060	12	125	2	B-DCA060 ...
DC R H 1616 KA060	DC R H 1616 KA060	16	125	2	B-DCA060 ...

Spare Parts	Ordering Code				
Holder	Screw	Key			
DC ... H ...	M2,5 × 7,5	KK 1751			

Blanks for Duo Cut A

B	-	DC	A	06	26	C4
Blank		Deep Groove	Type of blank	Width of blank [mm]	Insert length [mm] ×10	Grade code



Fig. 1

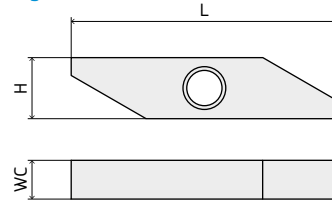
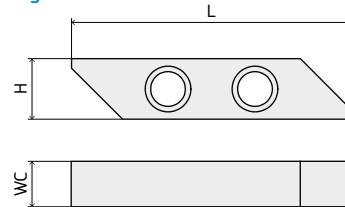


Fig. 2

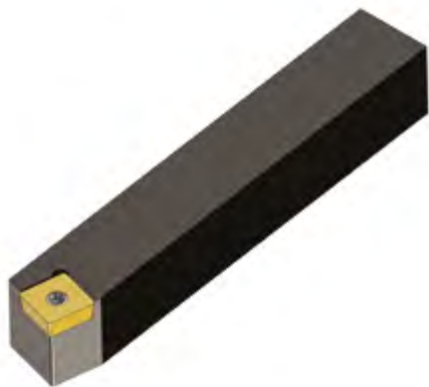


Ordering Code	Ident No.	WC	H	L	Fig.	Grade
						C41
B-DCA03524	B-DCA03524	3,5	24	5,5	1	●
B-DCA06037	B-DCA06037	6	37	8	2	●

Solution for grooving or turning. Insert with four cutting edges, completely grinded. Very used for producing of grooves of bearings. Custom solution (specific shapes) on request.

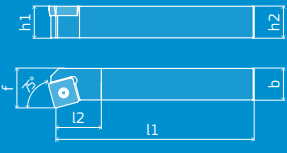
External holder

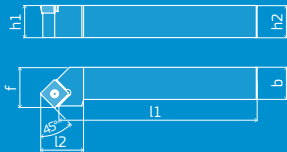
S	S	B	C	R/L	2020	K	12
Clamping method screw clamping	Insert shape	Style	Clearance angle	Right-hand or Left-hand version	Shank height × shank width [mm]	Length (ISO)	Size of blank [mm]



		Approach angle 75°				
Ordering Code	Ident No.	h1 = h2 = b	l1	l2	f	Suitable Blanks
SSBC R/L 2020 K12	SSBC R/L 2020 K12	20	125	20	17	SCGW 12 ...
SSBC R/L 2525 M12	SSBC R/L 2525 M12	25	150	20	17	SCGW 12 ...

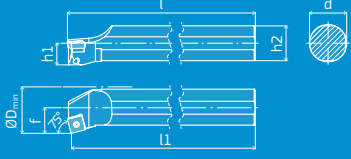
		Approach angle 45°				
Ordering Code	Ident No.	h1 = h2 = b	l1	l2	f	Suitable Blanks
SSDC N 1616 H12	SSDC N 1616 H12	16	100	25	8	SCGW 12 ...
SSDC N 2020 K12	SSDC N 2020 K12	20	125	25	10	SCGW 12 ...
SSDC N 2525 M12	SSDC N 2525 M12	25	150	25	12,5	SCGW 12 ...

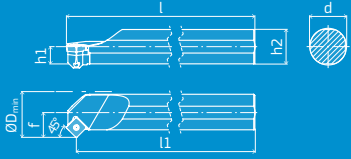
		Approach angle 75°				
Ordering Code	Ident No.	$h1 = h2 = b$	$l1$	$l2$	f	Suitable Blanks
SSKC R/L 1616 H12	SSKC R/L 1616 H12	16	100	23	20	SCGW 12...
SSKC R/L 2020 K12	SSKC R/L 2020 K12	20	125	23	25	SCGW 12...
SSKC R/L 2525 M12	SSKC R/L 2525 M12	25	150	23	32	SCGW 12...

		Approach angle 45°				
Ordering Code	Ident No.	$h1 = h2 = b$	$l1$	$l2$	f	Suitable Blanks
SSSC R/L 1616 H12	SSSC R/L 1616 H12	16	100	25	20	SCGW 12...
SSSC R/L 2020 K12	SSSC R/L 2020 K12	20	125	25	25	SCGW 12...
SSSC R/L 2525 M12	SSSC R/L 2525 M12	25	150	25	32	SCGW 12...

Spare Parts		Ordering Code				
Holder	Support Pad	Bush	Srew	Key		
SS ... R/L ... 12	SP 4221	KTB 1221	TT 1221	KK 1115		

Internal holder

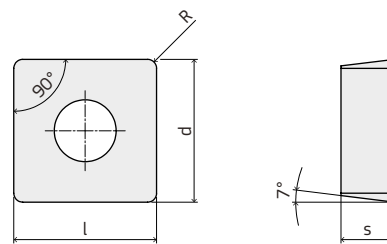
		Approach angle 75°							
Ordering Code	Ident No.	d	h1	h2	l	l1	f	D _{min}	Suitable Blanks
A32U SSKC R/L 12	A32U SSKC R/L 12	32	15	30	353,1	350	22	40	SCGW 12 ...
A40V SSKC R/L 12	A40V SSKC R/L 12	40	18,5	37	403,1	400	27	49	SCGW 12 ...

		Approach angle 45°							
Ordering Code	Ident No.	d	h1	h2	l	l1	f	D _{min}	Suitable Blanks
A32U SSSC R/L 12	A32U SSSC R/L 12	32	15	30	358,3	350	22	40	SCGW 12 ...
A40V SSSC R/L 12	A40V SSSC R/L 12	40	18,5	37	408,3	400	27	49	SCGW 12 ...

Spare Parts		Ordering Code				
Holder	Support Pad	Bush	Srew	Key		
A ... SS ... R/L 12	SP 4221	KTB 1221	TT 1221	KK 1115		

Blanks for SCGW

SCGW	12	04	01	C3
SCGW blank	Edge length [mm]	Insert thickness [mm]	Corner radius [mm]	Grade code

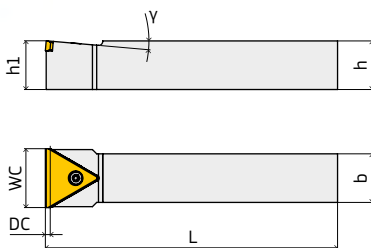
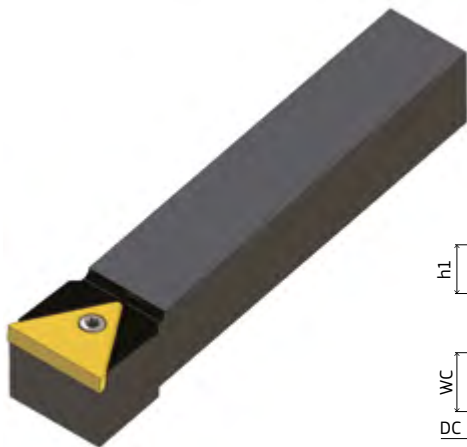


Ordering Code	Ident No.	l	d	s	R	Grade	
						C31	G
SCGW 120401	SCGW 120401	12,7	12,7	4,76	0	●	●

Grooving system for one plunge groove cutting. Different blanks for special profile grooves. Special profiles up to a width of 30 mm. Custom solution (specific shapes) on request.

Holder

CG	N	H	2020	M	12
Contour Groove	Neutral holder	Holder	Shank height x shank width [mm]	Length (ISO)	Size of blank [mm]



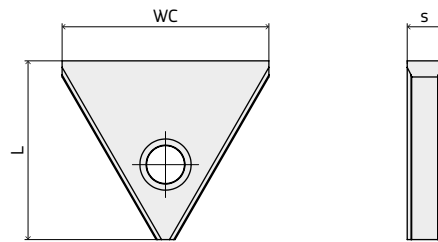
Ordering Code	Ident No.	WC	DC*	h1 = h = b	L	γ	Suitable Blanks
CGNH 2525 M30	CGNH 2525 M30	30	9,5	25	150	5°	B-CG 30 ...

* Possible depth of the profile on insert

Spare Parts	Ordering Code	
Holder	Screw	Key
CGNH ... 30	TT 9990	KK 2530

Blanks for Contour Groove 30

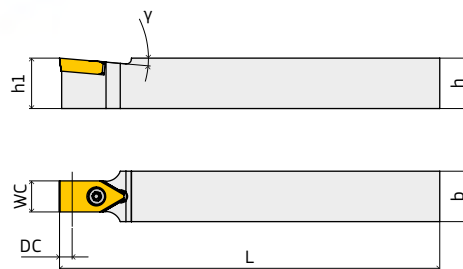
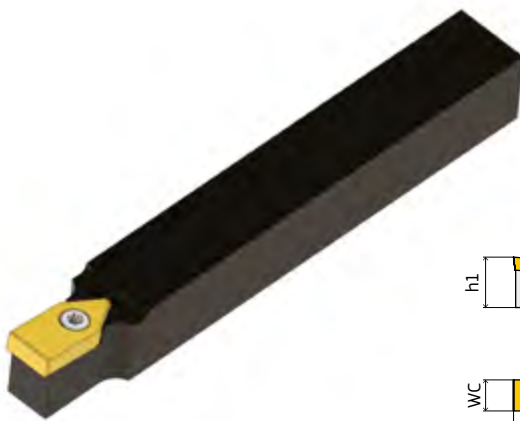
B	CG	12	20	C4
Blank	Contour Groove	Width of blank [mm]	Length of blank [mm]	Grade code



Ordering Code	Ident No.	WC	L	s	Grade		
					C42	G2	A82
B-CG3026	B-CG3026	30	26	5	●		●

Holder

CG	N	H	2020	M	12
Contour Groove	Neutral holder	Holder	Shank height x shank width [mm]	Length (ISO)	Size of blank [mm]



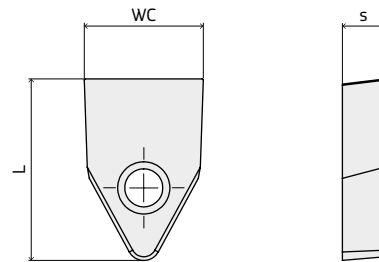
Ordering Code	Ident No.	WC	DC*	h1 = h = b	L	γ	Suitable Blanks
CGNH 1212 K12	CGNH 1212 K12	12	5	12	125	5°	B-CG 12 ...
CGNH 1414 K12	CGNH 1414 K12	12	5	14	125	5°	B-CG 12 ...
CGNH 1414 K16	CGNH 1414 K16	16	6,5	14	125	5°	B-CG 16 ...
CGNH 1616 K12	CGNH 1616 K12	12	5	16	125	5°	B-CG 12 ...
CGNH 1616 K16	CGNH 1616 K16	16	6,5	16	125	5°	B-CG 16 ...
CGNH 1616 K21	CGNH 1616 K21	21	9,5	16	125	5°	B-CG 21 ...
CGNH 2020 M12	CGNH 2020 M12	12	5	20	150	5°	B-CG 12 ...
CGNH 2020 M16	CGNH 2020 M16	16	6,5	20	150	5°	B-CG 16 ...
CGNH 2020 M21	CGNH 2020 M21	21	9,5	20	150	5°	B-CG 21 ...
CGNH 2525 M12	CGNH 2525 M12	12	5	25	150	5°	B-CG 12 ...
CGNH 2525 M16	CGNH 2525 M16	16	6,5	25	150	5°	B-CG 16 ...
CGNH 2525 M21	CGNH 2525 M21	21	9,5	25	150	5°	B-CG 21 ...
CGNH 2525 M25	CGNH 2525 M25	25	9,5	25	150	8°	B-CG 25 ...

* Possible depth of the profile on insert

Spare Parts	Ordering Code	
Holder	Screw	Key
CGNH ... 12	TT 1221	KK 1111
CGNH ... 16	TT 9950	KK 2520
CGNH ... 21	TT 9980	KK 2525
CGNH ... 25	TT 9980	KK 2525

Blanks for Contour Groove

B	CG	12	20	C4
Blank	Contour Groove	Width of blank [mm]	Length of blank [mm]	Grade code

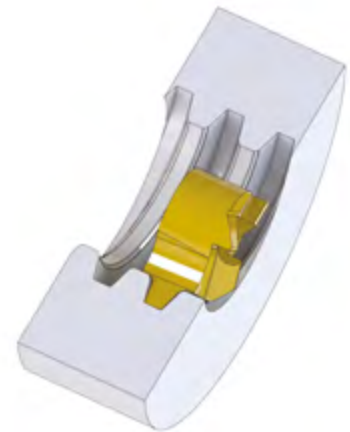
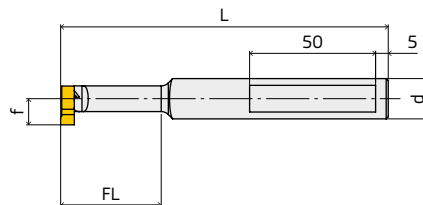
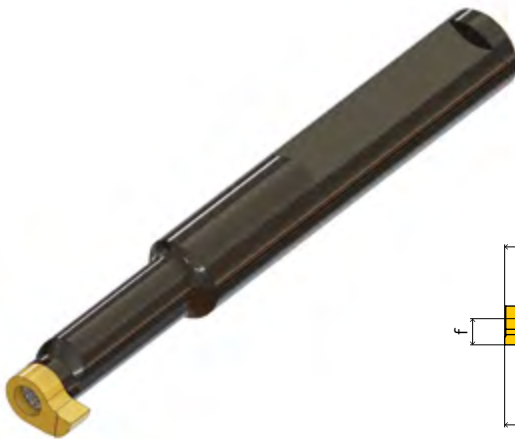


Ordering Code	Ident No.	WC	L	s	Grade		
					C42	G2	A82
B-CG1220	B-CG1220	12	20	5	●	●	●
B-CG1625	B-CG1625	16	25	6,5	●	●	●
B-CG2132	B-CG2132	21	32	7,5	●	●	●
B-CG2532	B-CG2532	25	32	5	●	●	●

Mini system for minimum bore diameter from 9,7 mm. Insert with one cutting edge. 3-point location in holder guarantees high repeatability and positioning of the insert. Custom solution (specific shapes) on request.

Holder

MMS	R/L	H	15	12	A
Mini Modular System	Right-hand or Left-hand version	Holder	Maximum work depth [mm]	Shank diameter [mm]	Type of blank

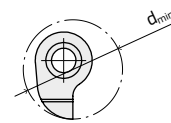
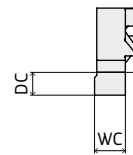


Ordering Code	Ident No.	d	FL	L	f	Suitable Blanks
MMS R/L H 1212 A	MMS R/L H 1212 A	12	12	80	6,35	R-MMS A ...
MMS R/L H 1512 A	MMS R/L H 1512 A	12	15	83	6,35	R-MMS A ...
MMS R/L H 2412 A	MMS R/L H 2412 A	12	24	92	6,35	R-MMS A ...
MMS R/L H 3212 A	MMS R/L H 3212 A	12	32	100	6,35	R-MMS A ...
MMS R/L H 4812 A	MMS R/L H 4812 A	12	48	115	6,35	R-MMS A ...
MMS R/L H 1412 B	MMS R/L H 1412 B	12	14	80	7,6	R-MMS B ...
MMS R/L H 2912 B	MMS R/L H 2912 B	12	29	95	7,6	R-MMS B ...
MMS R/L H 4212 B	MMS R/L H 4212 B	12	42	110	7,6	R-MMS B ...
MMS R/L H 5612 B	MMS R/L H 5612 B	12	56	120	7,6	R-MMS B ...
MMS R/L H 1616 C	MMS R/L H 1616 C	16	16	82	8,85	R-MMS C ...
MMS R/L H 3416 C	MMS R/L H 3416 C	16	34	100	8,85	R-MMS C ...
MMS R/L H 4516 C	MMS R/L H 4516 C	16	45	110	8,85	R-MMS C ...
MMS R/L H 6416 C	MMS R/L H 6416 C	16	64	130	8,85	R-MMS C ...
MMS R/L H 1816 D	MMS R/L H 1816 D	16	18	108	10,1	R-MMS D ...
MMS R/L H 4016 D	MMS R/L H 4016 D	16	40	130	10,1	R-MMS D ...
MMS R/L H 5616 D	MMS R/L H 5616 D	16	56	130	10,1	R-MMS D ...
MMS R/L H 8016 D	MMS R/L H 8016 D	16	80	150	10,1	R-MMS D ...

Spare Parts	Ordering Code				
Holder	Screw	Key			
MMS ... A	TS 0031	TK5108-IP			
MMS ... B	TS 0032	TK5109-IP			
MMS ... C	TS 0033	TK5110-IP			
MMS ... D	TS 0034	TK5115-IP			

Blanks for Mini Modular System

B	MMS	C	040	137	R/L	C24
Blank	Mini Modular System	Type of blank	Maximum work length [mm] ×10	Minimum diameter of workpiece [mm] ×10	Right-hand or Left-hand version	Grade code

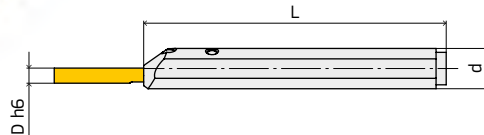
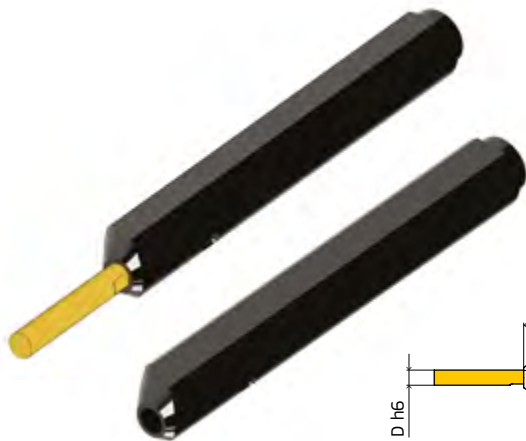


Ordering Code	Ident No.	WC	DC	d _{min}	Grade
					C242
B-MMSA030-097 R/L	B-MMSA030-097 R/L	3	3,0	9,7	●
B-MMSB035-117 R/L	B-MMSB035-117 R/L	3	3,5	11,7	●
B-MMSC040-137 R/L	B-MMSC040-137 R/L	3	4,0	13,7	●
B-MMSD045-157 R/L	B-MMSD045-157 R/L	4	4,5	15,7	●

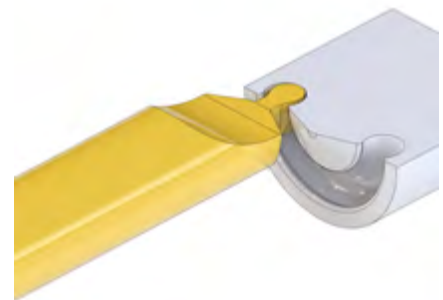
Mini system for minimum bore diameter from 2,5 mm. Insert with one cutting edge. With the ground taper on the tool shank and the fixed stop in the sleeve the length remains accurately constant and guaranteed cutting edge repeatability is achieved.

The cone of the threaded pin ensures secure tool locking and reduces cutting edge vibrations. Many of application areas. Custom solution (specific shapes) on request.

Holder

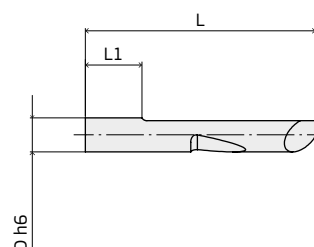
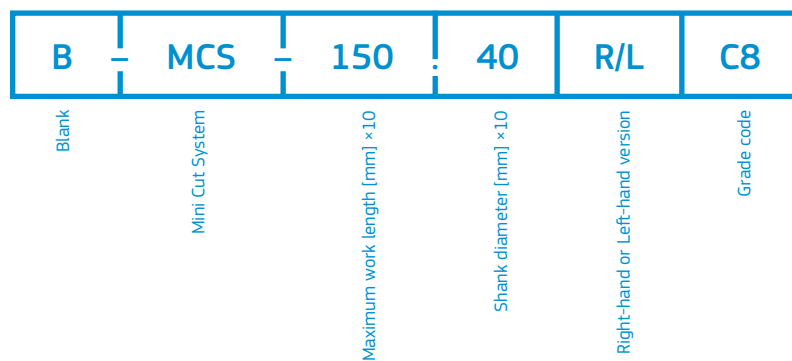


MCS	R/L	H	12	04
Mini Cut System	Right-hand or Left-hand version	Holder	Shank diameter [mm]	Diameter of blank [mm]



Ordering Code	Ident No.	D	d	L	Suitable Blanks
MCS R/L H 1204	MCS R/L H 1204	4	12	100	MCS- ... 40 R/L
MCS R/L H 1204	MCS R/L H 1204	4	12	100	R-MCS- ... 40 R/L
MCS R/L H 1206	MCS R/L H 1206	6	12	100	MCS- ... 40 R/L
MCS R/L H 1206	MCS R/L H 1206	6	12	100	R-MCS- ... 40 R/L
MCS R/L H 1606	MCS R/L H 1606	6	16	120	MCS- ... 60 R/L
MCS R/L H 1606	MCS R/L H 1606	6	16	120	R-MCS- ... 60 R/L
MCS R/L H 1608	MCS R/L H 1608	8	16	120	MCS- ... 80 R/L
MCS R/L H 1608	MCS R/L H 1608	8	16	120	R-MCS- ... 80 R/L
MCS R H 2010	MCS R H 2010	10	20	120	MCS- ... 100 R
MCS R H 2010	MCS R H 2010	10	20	120	R-MCS-... 100 R

Spare Parts	Ordering Code
Holder	Screw
MCS R/L 12 ...	TS 0043
MCS R/L 16 ...	TS 0044
MCS R 20 ...	TS 0044

Blanks for Mini Cut System


Ordering Code	Ident No.	D h6	L	L1	Grade		
					C25	C86	H27
B-MCS-100.40 R/L	B-MCS-100.40 R/L	4	34,4	10	●	●	●
B-MCS-100.60 R/L	B-MCS-100.60 R/L	6	40,6	10	●	●	●
B-MCS-100.80 R/L	B-MCS-100.80 R/L	8	40,4	10	●	●	●
B-MCS-100.100 R	B-MCS-100.100 R	10	40,4	10	●	●	●
B-MCS-150.40 R/L	B-MCS-150.40 R/L	4	39,4	15	●	●	●
B-MCS-150.60 R/L	B-MCS-150.60 R/L	6	45,6	15	●	●	●
B-MCS-150.80 R/L	B-MCS-150.80 R/L	8	45,4	15	●	●	●
B-MCS-150.100 R	B-MCS-150.100 R	10	45,4	15	●	●	●
B-MCS-200.40 R/L	B-MCS-200.40 R/L	4	44,4	20	●	●	●
B-MCS-200.60 R/L	B-MCS-200.60 R/L	6	50,6	20	●	●	●
B-MCS-200.80 R/L	B-MCS-200.80 R/L	8	50,4	20	●	●	●
B-MCS-200.100 R	B-MCS-200.100 R	10	50,4	20	●	●	●
B-MCS-250.40 R/L	B-MCS-250.40 R/L	4	49,4	25	●	●	●
B-MCS-250.60 R/L	B-MCS-250.60 R/L	6	55,6	25	●	●	●
B-MCS-250.80 R/L	B-MCS-250.80 R/L	8	55,4	25	●	●	●
B-MCS-250.100 R	B-MCS-250.100 R	10	55,4	25	●	●	●
B-MCS-300.40 R/L	B-MCS-300.40 R/L	4	54,4	30	●	●	●
B-MCS-300.60 R/L	B-MCS-300.60 R/L	6	60,6	30	●	●	●
B-MCS-300.80 R/L	B-MCS-300.80 R/L	8	60,4	30	●	●	●
B-MCS-300.100 R	B-MCS-300.100 R	10	60,4	30	●	●	●
B-MCS-350.40 R/L	B-MCS-350.40 R/L	4	60,4	35	●	●	●
B-MCS-350.60 R/L	B-MCS-350.60 R/L	6	65,6	35	●	●	●
B-MCS-350.80 R/L	B-MCS-350.80 R/L	8	65,4	35	●	●	●
B-MCS-350.100 R	B-MCS-350.100 R	10	65,4	35	●	●	●
B-MCS-400.40 R/L	B-MCS-400.40 R/L	4	64,4	40	●	●	●
B-MCS-400.60 R/L	B-MCS-400.60 R/L	6	70,6	40	●	●	●
B-MCS-400.80 R/L	B-MCS-400.80 R/L	8	70,4	40	●	●	●
B-MCS-400.100 R	B-MCS-400.100 R	10	70,4	40	●	●	●
B-MCS-450.60 R/L	B-MCS-450.60 R/L	6	75,6	45	●	●	●

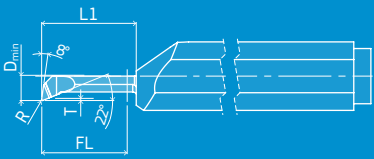
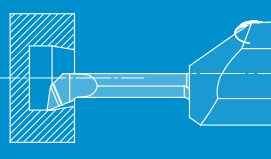
Ordering Code	Ident No.	D h6	L	L1	Grade		
					C25	C86	H27
B-MCS-450.80 R/L	B-MCS-450.80 R/L	8	75,4	45	●	●	●
B-MCS-450.100 R	B-MCS-450.100 R	10	75,4	45	●	●	●
B-MCS-500.60 R/L	B-MCS-500.60 R/L	6	80,6	50	●	●	●
B-MCS-500.80 R/L	B-MCS-500.80 R/L	8	80,4	50	●	●	●
B-MCS-500.100 R	B-MCS-500.100 R	10	80,4	50	●	●	●
B-MCS-550.60 R/L	B-MCS-550.60 R/L	6	85,6	55	●	●	●
B-MCS-550.80 R/L	B-MCS-550.80 R/L	8	85,4	55	●	●	●
B-MCS-550.100 R	B-MCS-550.100 R	10	85,4	55	●	●	●
B-MCS-600.60 R/L	B-MCS-600.60 R/L	6	90,6	60	●	●	●
B-MCS-600.80 R/L	B-MCS-600.80 R/L	8	90,4	60	●	●	●
B-MCS-600.100 R	B-MCS-600.100 R	10	90,4	60	●	●	●
B-MCS-650.80 R/L	B-MCS-650.80 R/L	8	95,4	65	●	●	●
B-MCS-650.100 R	B-MCS-650.100 R	10	95,4	65	●	●	●
B-MCS-700.80 R/L	B-MCS-700.80 R/L	8	100,4	70	●	●	●
B-MCS-700.100 R	B-MCS-700.100 R	10	100,4	70	●	●	●
B-MCS-750.100 R	B-MCS-750.100 R	10	105,4	75	●	●	●
B-MCS-800.100 R	B-MCS-800.100 R	10	110,4	80	●	●	●

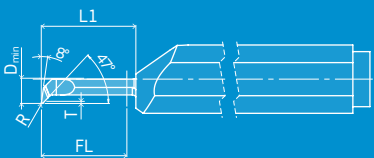
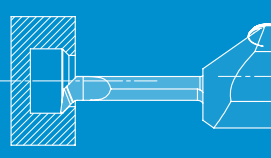
Standard inserts for Mini Cut System

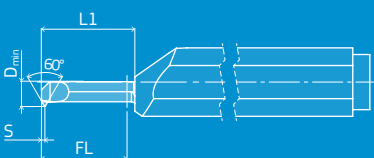
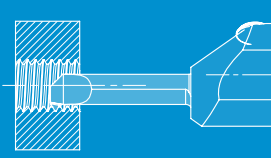
Turning 95°									
Ordering Code	Ident No.	D _{min}	FL	R	T	L1	Grade		
							C86	C25	H27
MCS-D-250401-200.40R	MCS-D-250401-200.40R	2,5	20	0,1	0,4	22	●	●	●
MCS-D-300401-200.40R	MCS-D-300401-200.40R	3,0	20	0,1	0,4	22	●	●	●
MCS-D-390602-150.40R	MCS-D-390602-150.40R	3,9	15	0,2	0,6	17	●	●	●
MCS-D-590802-200.60R	MCS-D-590802-200.60R	5,9	20	0,2	0,8	22	●	●	●
MCS-D-590801-150.60R	MCS-D-590801-150.60R	5,9	15	0,1	0,8	17	●	●	●
MCS-D-6005015-420.60R	MCS-D-6005015-420.60R	6,0	42	0,15	0,8	44	●	●	●

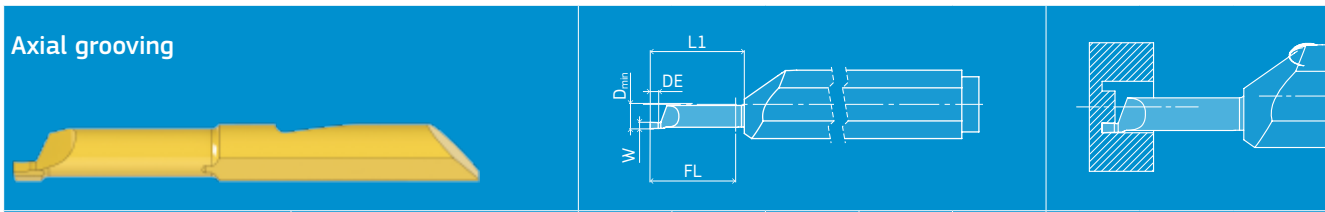
Grooving									
Ordering Code	Ident No.	D _{min}	W	DE	FL	L1	Grade		
							C86	C25	H27
MCS-S-39100800-100.40R	MCS-S-39100800-100.40R	3,6	1	0,8	10	12	●	●	●
MCS-S-59151800-100.60R	MCS-S-59151800-100.60R	5,9	1,5	1,8	10	12	●	●	●
MCS-S-69202500-150.80R	MCS-S-69202500-150.80R	6,9	2	2,5	15	17	●	●	●
MCS-S-79182500-250.80R	MCS-S-79182500-250.80R	7,9	1,8	2,6	25	27	●	●	●

CIR-CLIP DIN471/472										
Ordering Code	Ident No.	D _{min}	W	DE	R	FL	L1	Grade		
								C86	C25	H27
MCS-472-41139110-150.40R	MCS-472-41139110-150.40R	4,1	1,36	1,1	0,05	15	17	●	●	●
MCS-472-84119200-200.80R	MCS-472-84119200-200.80R	8,4	1,19	2	0,05	20	22	●	●	●
MCS-472-84169250-200.80R	MCS-472-84169250-200.80R	8,4	1,69	2,5	0,05	20	22	●	●	●

Copying									
Ordering Code	Ident No.	D _{min}	FL	R	T	L1	Grade		
							C86	C25	H27
MCS-K-390802-150.40R	MCS-K-390802-150.40R	3,9	15	0,2	0,8	17	●	●	●
MCS-K-500502-250.60R	MCS-K-500502-250.60R	5	25	0,2	0,5	27	●	●	●
MCS-K-591802-200.60R	MCS-K-591802-200.60R	5,9	20	0,2	0,5	22	●	●	●

Copying 45°									
Ordering Code	Ident No.	D _{min}	FL	R	T	L1	Grade		
							C86	C25	H27
MCS-K45-391304-200.40R	MCS-K45-391304-200.40R	3,9	20	0,4	1,3	22	●	●	●
MCS-K45-400604-150.40R	MCS-K45-400604-150.40R	4	15	0,4	0,6	17	●	●	●

Threading 60°, metric partial profile										
Ordering Code	Ident No.	D _{min}	Th	P	S	FL	L1	Grade		
								C86	C25	H27
MCS-G-M5-150.40R	MCS-G-M5-150.40R	4	M5	0,5-1,0	0,7	15	17	●	●	●
MCS-G-M8-200.60R	MCS-G-M8-200.60R	6	M6	0,5-1,5	0,8	20	22	●	●	●



Ordering Code	Ident No.	D _{min}	W	DE	FL	L1	Grade		
							C86	C25	H27
MCS-A-70152000-200.60R	MCS-A-70152000-200.60R	7	1,5	2	20	22	●	●	●
MCS-A-90152000-250.80R	MCS-A-90152000-250.80R	9	1,5	2	25	27	●	●	●

B	4	X
----------	----------	----------

Grade code:
Material group

Grade code:
Application range

Internal code:
Number 0–99

ISO	KONRAD TOOLS	ISO	KONRAD TOOLS
P	A	10	2
M	B	15	3
K	C	20	4
N	D	25	5
S	E	30	6
H	F	35	7
Cermet	G	40	8
CBN	H	45	9
PCD	I	50	0



Designation
of coating

Place for internal
information:
Number 0-99

Compo- sition	KONRAD TOOLS
TiAlN	A
AlTiN	B
TiB2	C
Diamant	D
TiN	E
AlCrN	F

The most commonly used coatings

TiAlN	Universal solution, for steel, stainless steel, and cast iron
AlTiN	For all types of cast iron and steel up to 60HRC
TiB2	This sputtered coating composition has nearly no affinity to non-ferrous materials, especially aluminium
Diamant	For the demanding machining of highly abrasive materials
TiN	For less demanding applications, low cutting speeds
AlCrN	Universal coating for superb results in dry and wet machining at high cutting speeds

Type of coating	Application area					
	Steel	Stainless steel	Iron casting	Non-ferrous metals	High temperature alloys	Hardened materials
	P	M	K	N	S	H
TiAlN	●	●	●		●	
AlTiN	○	●	○		●	●
TiB2				●		
Diamant				●	●	
TiN	○	●				
AlCrN	●	●	○		○	

● Main application ○ Secondary application

We are able to advise customers with suitable coating on the basis the application and workpiece.



PRODUCER

KONRAD TOOLS

Ing. Jan Konrad

TMC CR, s.r.o.

Masná 27/9, 602 00 Brno

Czech Republic

www.konradtools.com